

PINEWOOD EAST OF WELLINGTON

P.U.D.
IN PART OF SECTION 34, TWP. 43 S., RGE. 41 E.
PALM BEACH COUNTY, FLORIDA
-IN 3 SHEETS SHEET NO. 3

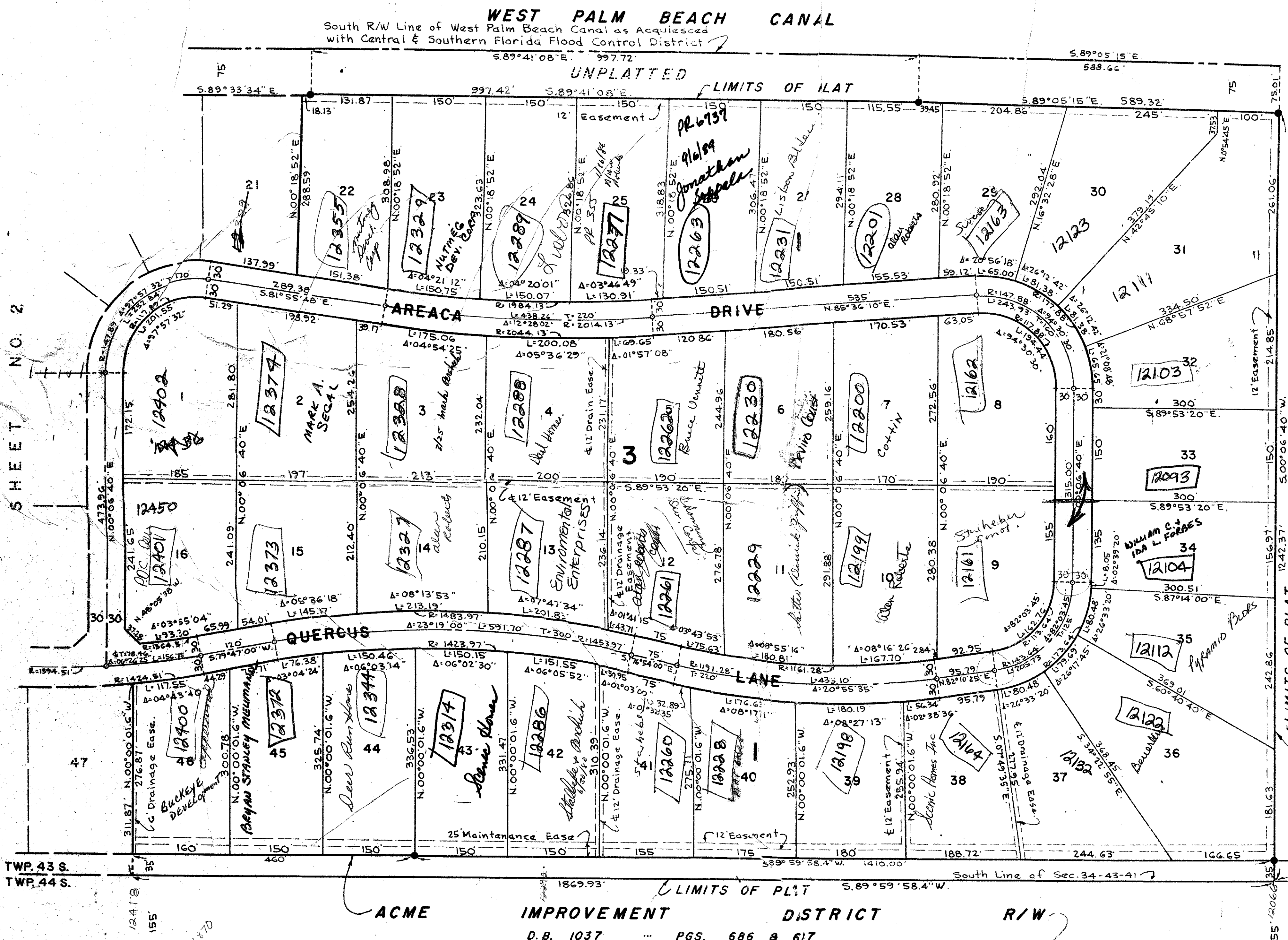
GEE & JENSON
ENGINEERS-ARCHITECTS-PLANNERS, INC.
WEST PALM BEACH, FLORIDA
NOVEMBER 1975

98

STATE OF FLORIDA ss
COUNTY OF PALM BEACH
This Plat was filed for record at _____ M.
this _____ day of _____, 1975,
and duly recorded in Plat Book No. _____
on page _____
JOHN B. DUNKLE, Clerk Circuit Court
By _____, D.C.



SCALE IN FEET
SCALE: 1" = 100'



NOTE
Building Setback Lines shall be as required by Palm Beach County Zoning Regulations.
There shall be no buildings or other structures placed on Utility Easements.
There shall be no buildings or any kind of construction or trees or shrubs placed on Drainage Easements.
Easements are for Public Utilities, unless otherwise noted.
● denotes Permanent Reference Monument
○ denotes Permanent Control Point
All bearings shown hereon are relative to an assumed meridian use throughout Wellington.
Where Utility Easements and Drainage Easements cross, Drainage Easements shall take precedent.

SHEET NO. 2

TWP. 43 S.
TWP. 44 S.

ACME IMPROVEMENT DISTRICT R/W
D.B. 1037 PGS. 686 & 617

UNPLATTED
PINEWOOD EAST OF WELLINGTON P.U.D.
34/43/41

61
0332 375
32/198